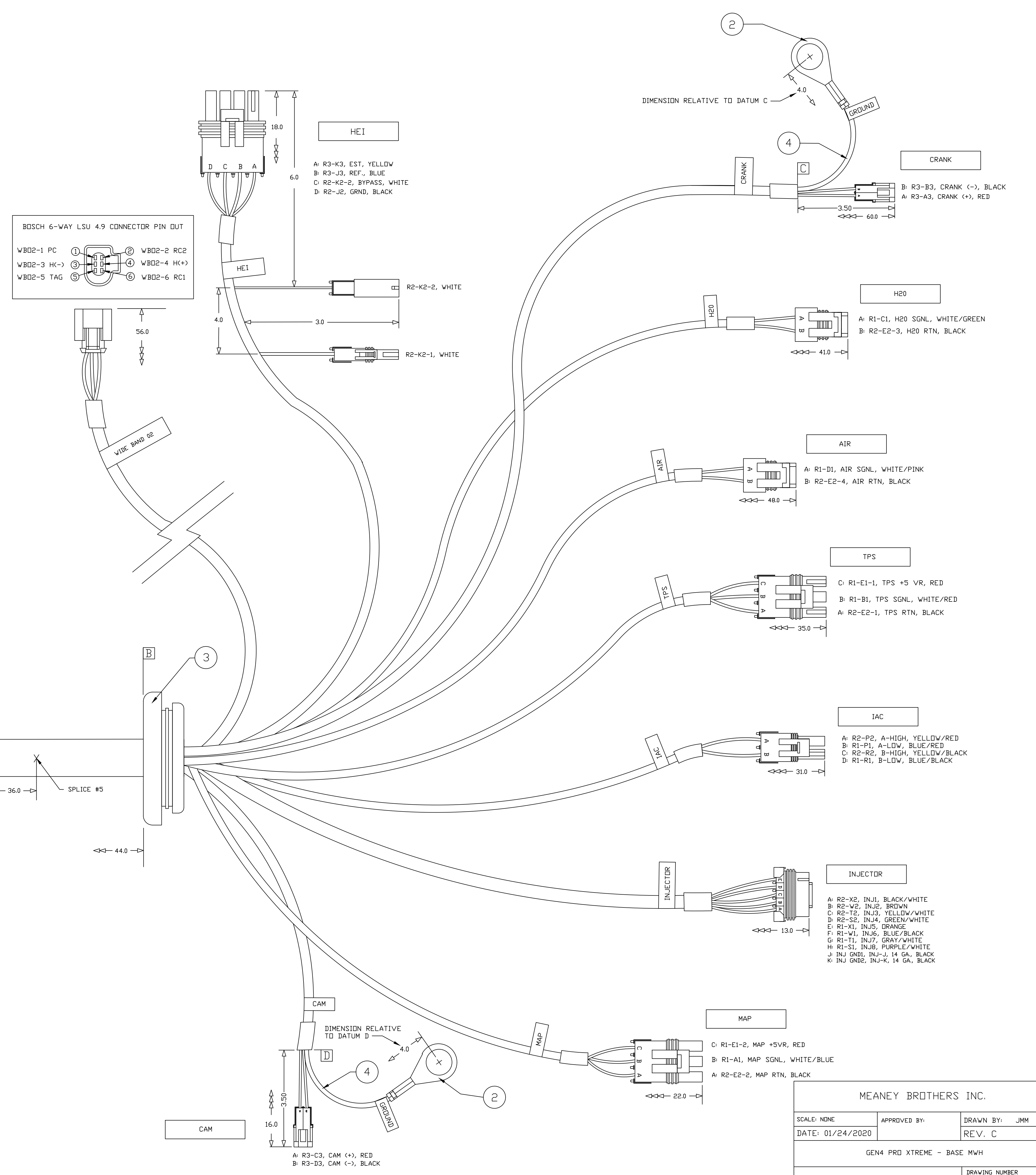
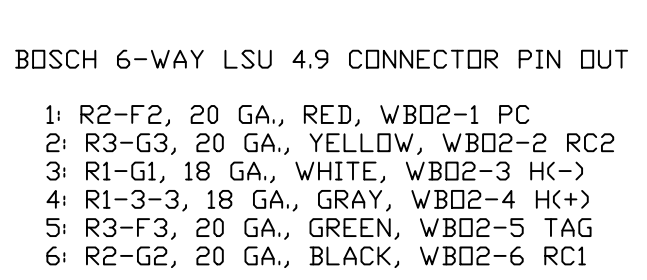
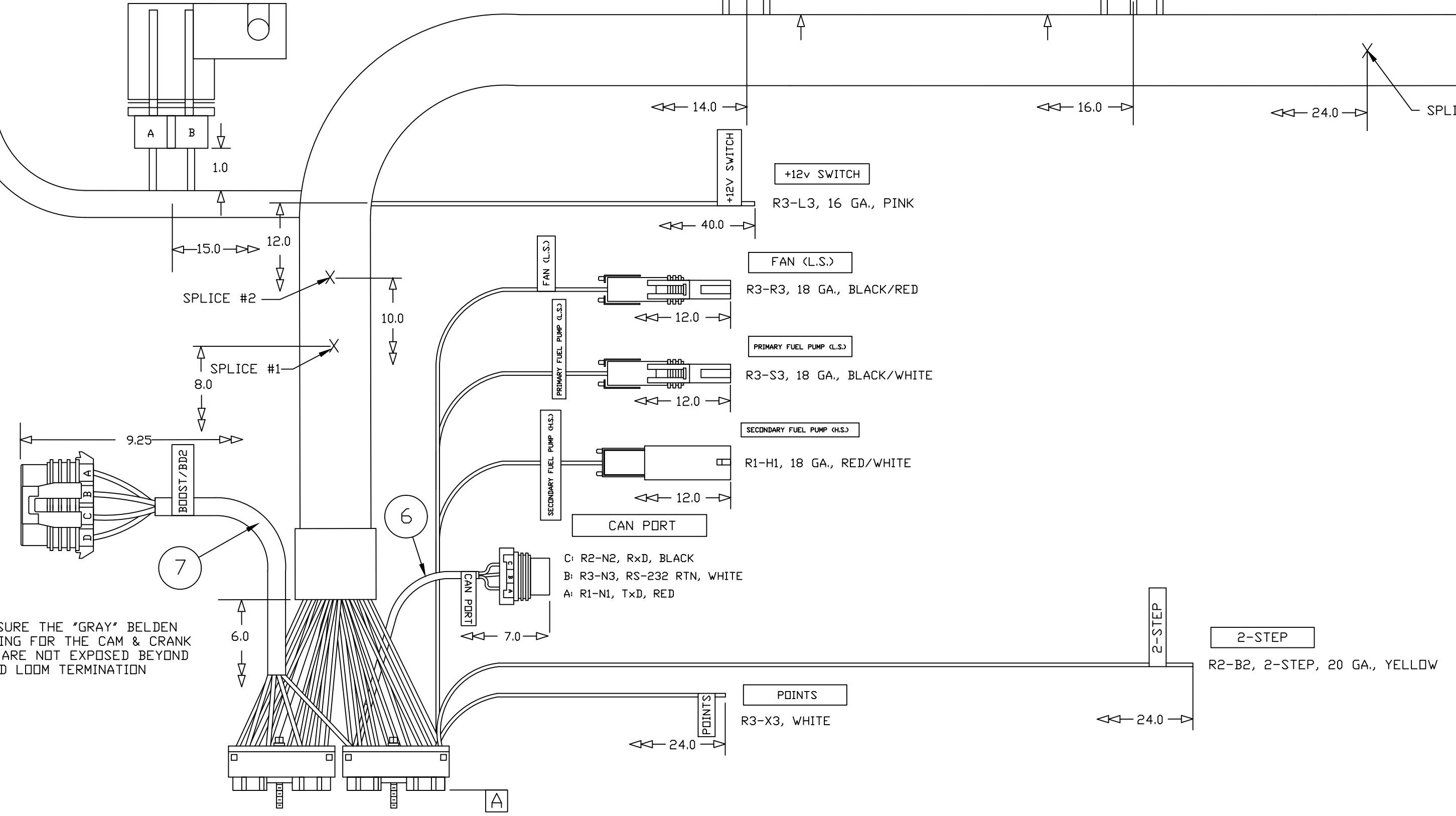
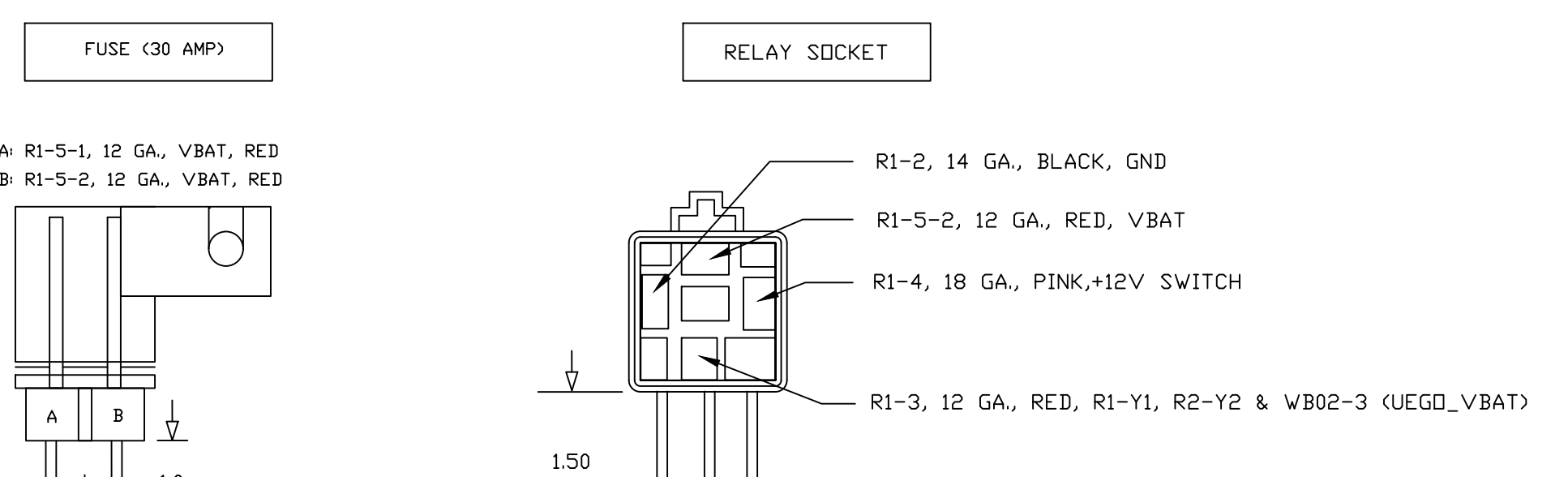
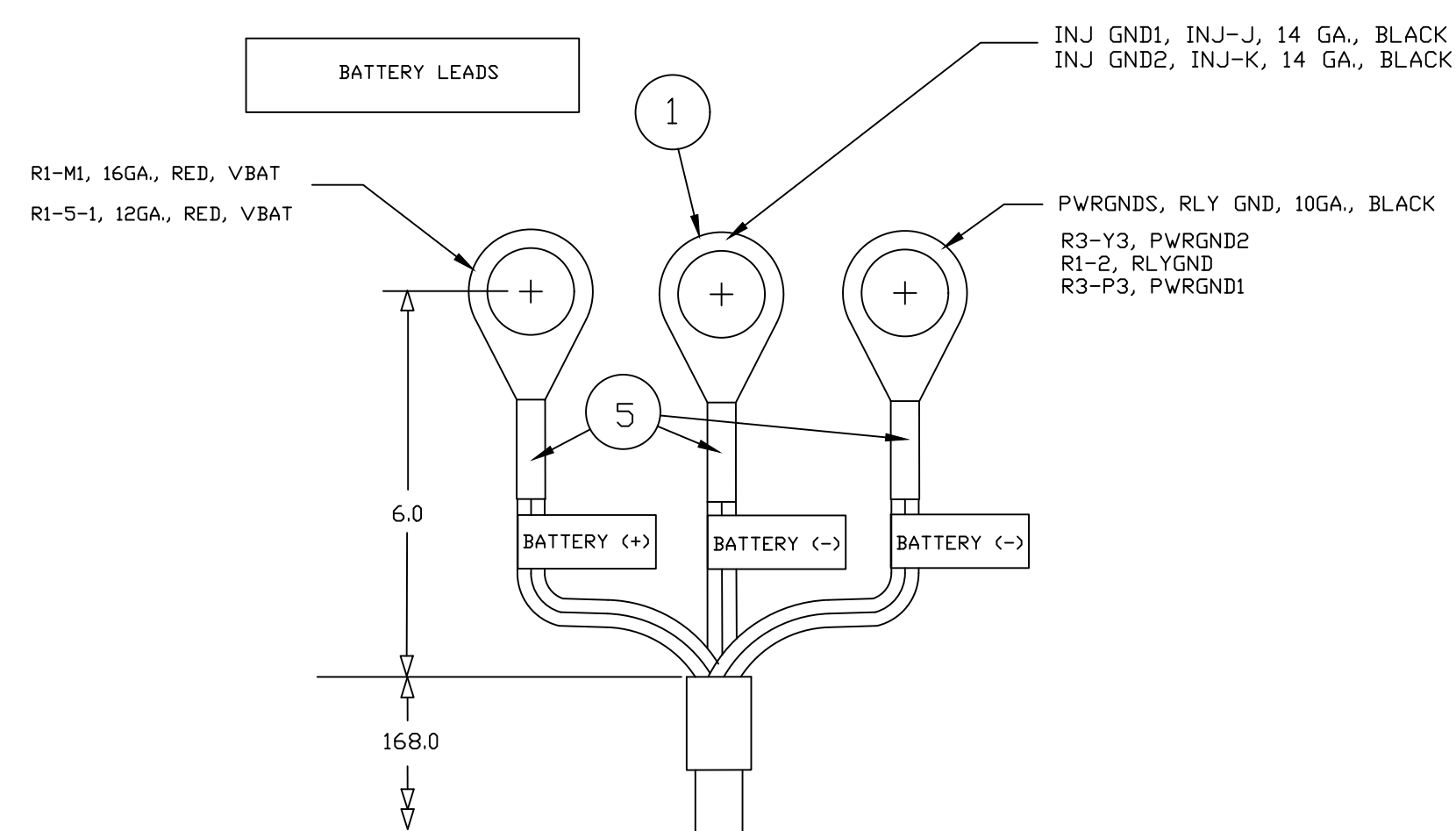


NOTES:

- 10. ALL DIMENSIONS SHOWN WITH SYMBOL \leftrightarrow END AT 30-WAY CONNECTOR AT DATUM A
- 11. ALL DIMENSIONS SHOWN WITH SYMBOL \leftrightarrow END AT HARNESS GRIMMET AT DATUM B
- 12. ALL DIMENSIONS ARE INCHES WITH A TOLERANCE OF +/- 0.50"

| ECH CIRCUIT | WIRE GAUGE | GOES TO | WIRE COLOR | NOTES |
|-------------|------------|----------------------------|--------------|------------------------------|
| R2-E2-1 | 20 | TPS-A | BLACK | TPS RTN |
| R1-E1-1 | 20 | TPS-B | WHITE/RED | TPS SVR |
| R2-E2-2 | 20 | MAP-A | BLACK | MAP RTN |
| R1-A1 | 18 | MAP-B | WHITE/BLUE | MAP SGNL |
| R1-E1-2 | 20 | MAP-C | RED | MAP SVR |
| R1-C1 | 18 | H2O-A | WHITE | H2O SGNL |
| R2-E2-3 | 20 | H2O-B | BLACK | H2O RTN |
| R1-D1 | 18 | AIR-A | WHITE/PINK | AIR SGNL |
| R2-E2-4 | 20 | AIR-B | BLACK | AIR RTN |
| R2-X2 | 15 | INJ-A | BLACK/WHITE | INJ1 |
| R2-W2 | 16 | INJ-B | BROWN | INJ2 |
| R2-T2 | 16 | INJ-C | YELLOW/WHITE | INJ3 |
| R2-S2 | 16 | INJ-D | GREEN/WHITE | INJ4 |
| R1-X1 | 16 | INJ-E | BROWN | INJ5 |
| R1-W1 | 16 | INJ-F | BLUE/BLACK | INJ6 |
| R1-T1 | 16 | INJ-G | GRAY/WHITE | INJ7 |
| R1-S1 | 16 | INJ-H | PURPLE/WHITE | INJ8 |
| | 14 | INJ-J | BLACK | INJ-J GRND |
| R3-A3 | 14 | INJ-K | BLACK | INJ-K GRND |
| R3-B3 | 16 | CRANK-A | BLACK | CRANK (-) |
| R3-C3 | 16 | CRANK-B | BLACK | CRANK (+) |
| R3-D3 | 16 | CAM-A | RED | CAM (+) |
| R2-F2 | 20 | CAM-B | BLACK | CAM (-) |
| R3-G3 | 20 | V802-1 | RED | PC |
| R1-G1 | 18 | V802-2 | YELLOW | RC2 |
| R3-F3 | 18 | V802-3 | WHITE | HK(-) |
| R2-G2 | 20 | V802-4 | GRAY | HK(+) |
| R3-X3 | 18 | V802-5 | GREEN | TAG |
| R1-N1 | 18 | V802-6 | BLACK | REL |
| R3-N3 | 18 | CAN FORT-A | RED | TXD |
| R2-N2 | 18 | CAN FORT-B | WHITE | RS232 RTN |
| R3-X3 | 18 | CAN FORT-C | BLACK | RXD |
| R3-L3 | 18 | POINTS | WHITE | POINTS DUT |
| R1-M1 | 18 | +12V SWITCH | PINK | +12V SWITCH |
| R2-Y2 | 14 | ECM VBAT | RED | VBAT |
| R1-Y1 | 14 | ECM VBAT | RED | VBAT |
| R3-Y3 | 15 | GN2 | BLACK | PWR/GRND2 |
| R3-P3 | 16 | GN2 | BLACK | PWR/GRND1 |
| R2-L2 | 18 | BOOST / B2P-A | PINK | TIMER ENABLE |
| R3-T3 | 18 | BOOST / B2P-B | WHITE | BOOST INCREMENT |
| R3-V3 | 18 | BOOST / B2P-C | BLUE | BOOST INCREMENT |
| R1-F1 | 18 | BOOST / B2P-D | YELLOW | SECOND BIG DRIVE |
| R2-P2 | 18 | IAC-A | YELLOW/RED | IAC A-HIGH |
| R1-P1 | 18 | IAC-B | BLUE/RED | IAC A-LOW |
| R2-R2 | 18 | IAC-C | YELLOW/BLACK | IAC B-HIGH |
| R1-R1 | 18 | IAC-D | BLUE/BLACK | IAC B-LOW |
| R3-K3 | 18 | HEI-A | YELLOW | EST |
| R3-J3 | 18 | HEI-B | REFERENCE | REFERENCE |
| R2-K2-1 | 18 | HEI-C | WHITE | BYPASS |
| R2-J2 | 18 | HEI-D | BLACK | HEI-GRND |
| R2-B2 | 20 | 2-STEP | YELLOW | 2-STEP |
| R3-R3 | 18 | FAN (L.S.) | BLACK/RED | FAN ENABLE (L.S.) |
| R3-S3 | 18 | PRIMARY FUEL PUMP (L.S.) | BLACK/WHITE | PRIMARY F.P. ENABLE (L.S.) |
| R1-H1 | 18 | SECONDARY FUEL PUMP (H.S.) | RED/WHITE | SECONDARY F.P. ENABLE (H.S.) |



| | | | |
|----------------------------|-------------------------------|---------------|--|
| MEANEY BROTHERS INC. | | | |
| SCALE NONE | APPROVED BY: | DRAWN BY: JMM | |
| DATE: 01/24/2020 | | REV. C | |
| GEN4 PRO XTREME - BASE M/H | | | |
| Customer version | DRAWING NUMBER JMI-006-072 | | |