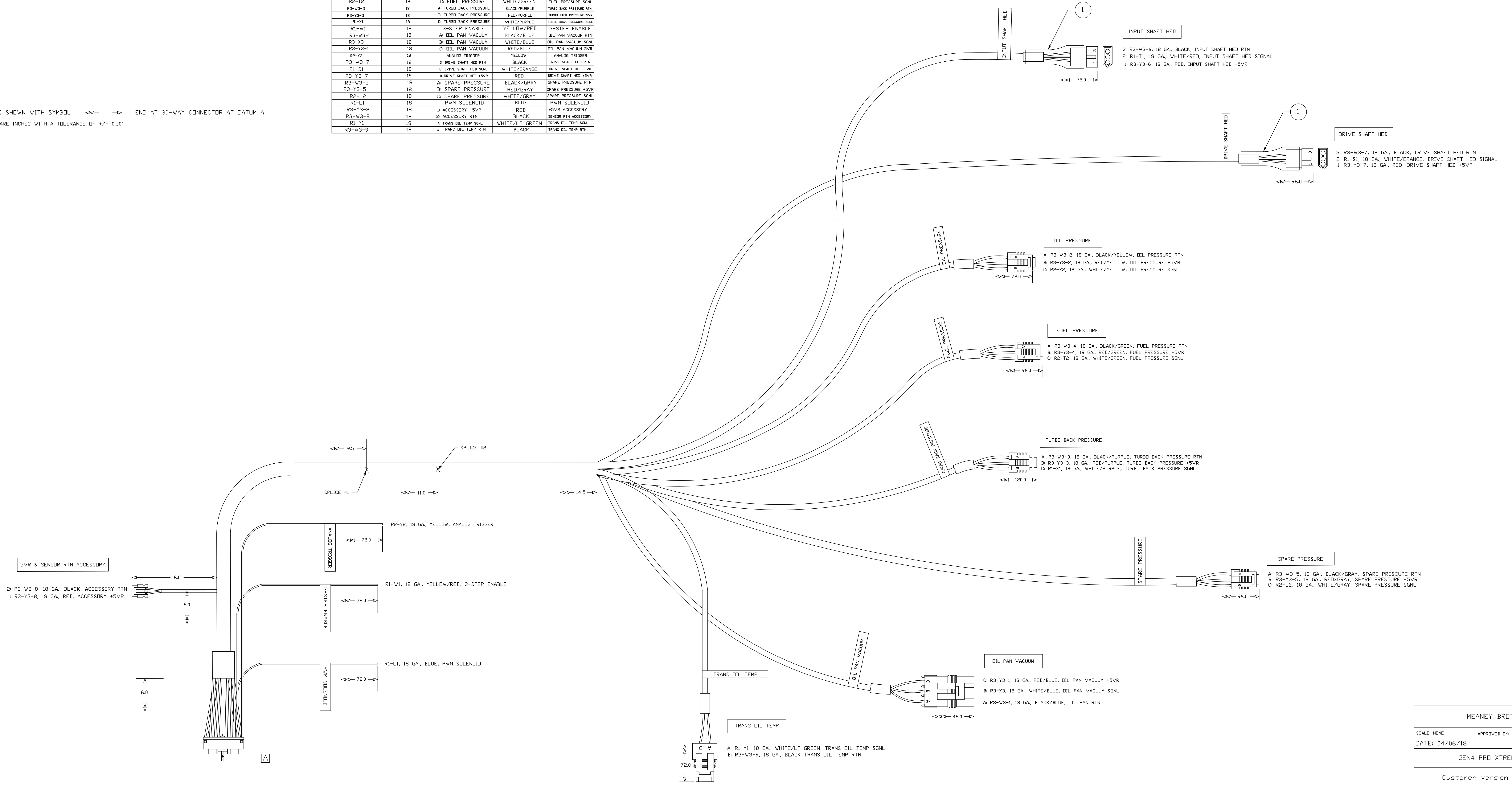


NOTES:

- 10. ALL DIMENSIONS SHOWN WITH SYMBOL  $\leftarrow$   $\rightarrow$  END AT 30-WAY CONNECTOR AT DATUM A
- 11. ALL DIMENSIONS ARE INCHES WITH A TOLERANCE OF +/- 0.50".

ECM CIRCUIT	WIRE GAUGE	GOES TO	WIRE COLOR	NOTES
R3-V3-6	18	3 INPUT SHAFT HED RTN	BLACK	INPUT SHAFT HED RTN
R1-T1	18	2 INPUT SHAFT HED SGNL	WHITE/RED	INPUT SHAFT HED SGNL
R3-V3-6	18	3 INPUT SHAFT HED +SVR	RED	INPUT SHAFT HED +SVR
R3-V3-2	18	A OIL PRESSURE	BLACK/YELLOW	OIL PRESSURE RTN
R3-Y3-2	18	B OIL PRESSURE	RED/YELLOW	OIL PRESSURE +SVR
R2-X2	18	C OIL PRESSURE	WHITE/YELLOW	OIL PRESSURE SGNL
R3-V3-4	18	A FUEL PRESSURE	BLACK/GREEN	FUEL PRESSURE RTN
R3-Y3-4	18	B FUEL PRESSURE	RED/GREEN	FUEL PRESSURE +SVR
R2-T2	18	C FUEL PRESSURE	WHITE/GREEN	FUEL PRESSURE SGNL
R3-V3-3	18	A TURBO BACK PRESSURE	BLACK/PURPLE	TURBO BACK PRESSURE RTN
R3-Y3-3	18	B TURBO BACK PRESSURE	RED/PURPLE	TURBO BACK PRESSURE +SVR
R1-X1	18	C TURBO BACK PRESSURE	WHITE/PURPLE	TURBO BACK PRESSURE SGNL
R1-W1	18	3-STEP ENABLE	YELLOW/RED	3-STEP ENABLE
R3-V3-1	18	A OIL PAN VACUUM	BLACK/BLUE	OIL PAN VACUUM RTN
R3-X3	18	B OIL PAN VACUUM	WHITE/BLUE	OIL PAN VACUUM +SVR
R3-Y3-1	18	C OIL PAN VACUUM	RED/BLUE	OIL PAN VACUUM SGNL
R2-Y2	18	ANALOG TRIGGER	YELLOW	ANALOG TRIGGER
R3-V3-7	18	3 DRIVE SHAFT HED RTN	BLACK	DRIVE SHAFT HED RTN
R1-S1	18	2 DRIVE SHAFT HED SGNL	WHITE/GRANGE	DRIVE SHAFT HED SGNL
R3-Y3-7	18	3 DRIVE SHAFT HED +SVR	RED	DRIVE SHAFT HED +SVR
R3-V3-5	18	A SPARE PRESSURE	BLACK/GRAY	SPARE PRESSURE RTN
R3-Y3-5	18	B SPARE PRESSURE	RED/GRAY	SPARE PRESSURE +SVR
R2-L2	18	C SPARE PRESSURE	WHITE/GRAY	SPARE PRESSURE SGNL
R1-L1	18	PWM SOLENOID	BLUE	PWM SOLENOID
R3-V3-8	18	3 ACCESSORY +SVR	RED	+SVR ACCESSORY
R3-V3-8	18	2 ACCESSORY RTN	BLACK	SENSOR RTN ACCESSORY
R1-Y1	18	A TRANS OIL TEMP SGNL	WHITE/LT GREEN	TRANS OIL TEMP SGNL
R3-V3-9	18	B TRANS OIL TEMP RTN	BLACK	TRANS OIL TEMP RTN



MEANEY BROTHERS, INC.			
SCALE: NONE	APPROVED BY:	DRAWN BY: JHM	
DATE: 04/06/18	REV. D		
GEN4 PRO XTREME DAE MWH			
Customer version	DRAWING NUMBER	JMJ-006-077	